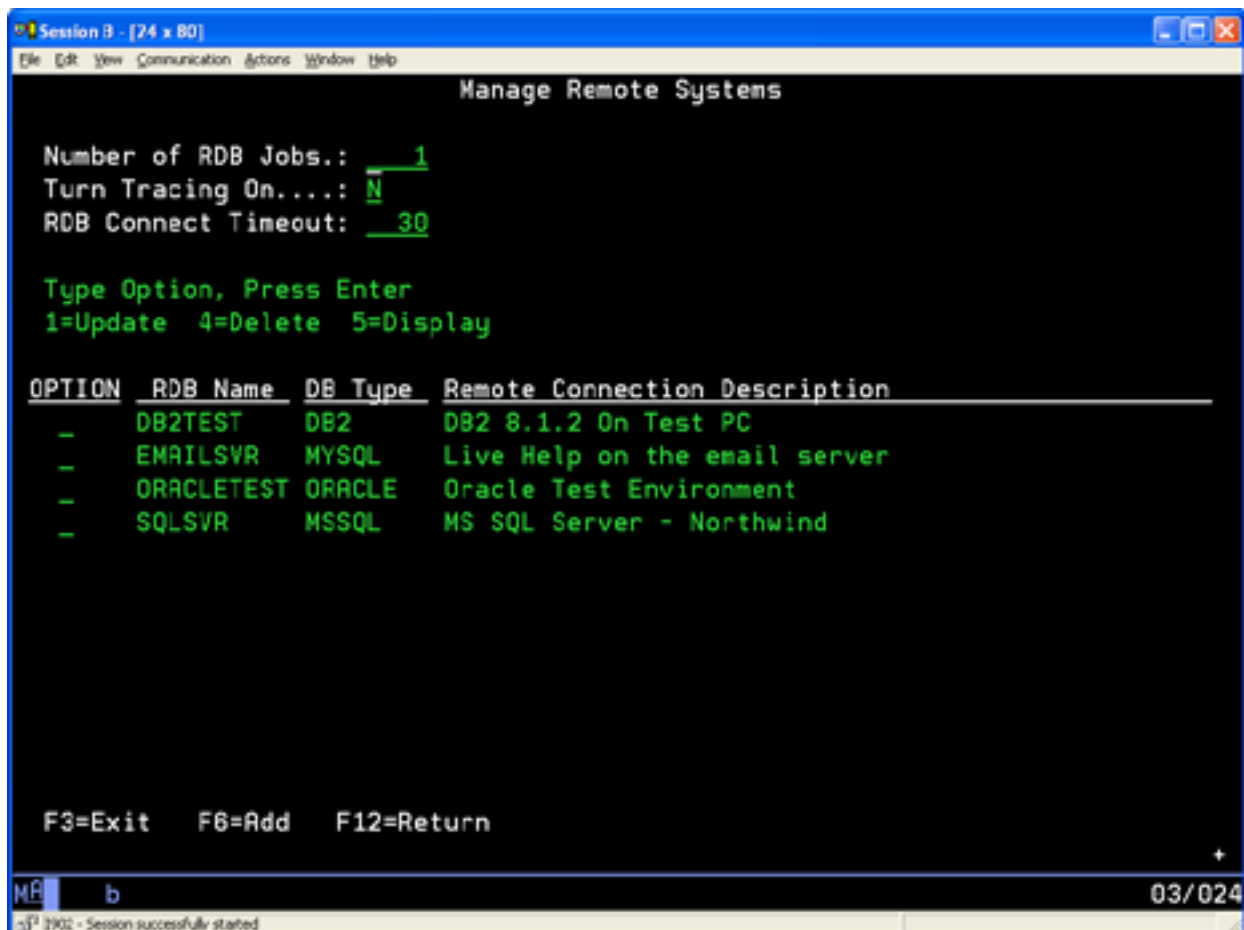




DBU RDB Documentation

To use DBURDB you must first start the DBURDB subsystem, and then configure the remote connections you wish to use. To start the DBURDB subsystem, from a System i command line execute the command **STRSBS SBSDBURDBSBS**. You will have at least one RDBWORKER job running in the subsystem.

To start configuring DBURDB, from a System i command line execute the command **DBURDBCFG**. This will take you to the **Manage Remote Systems** screen.

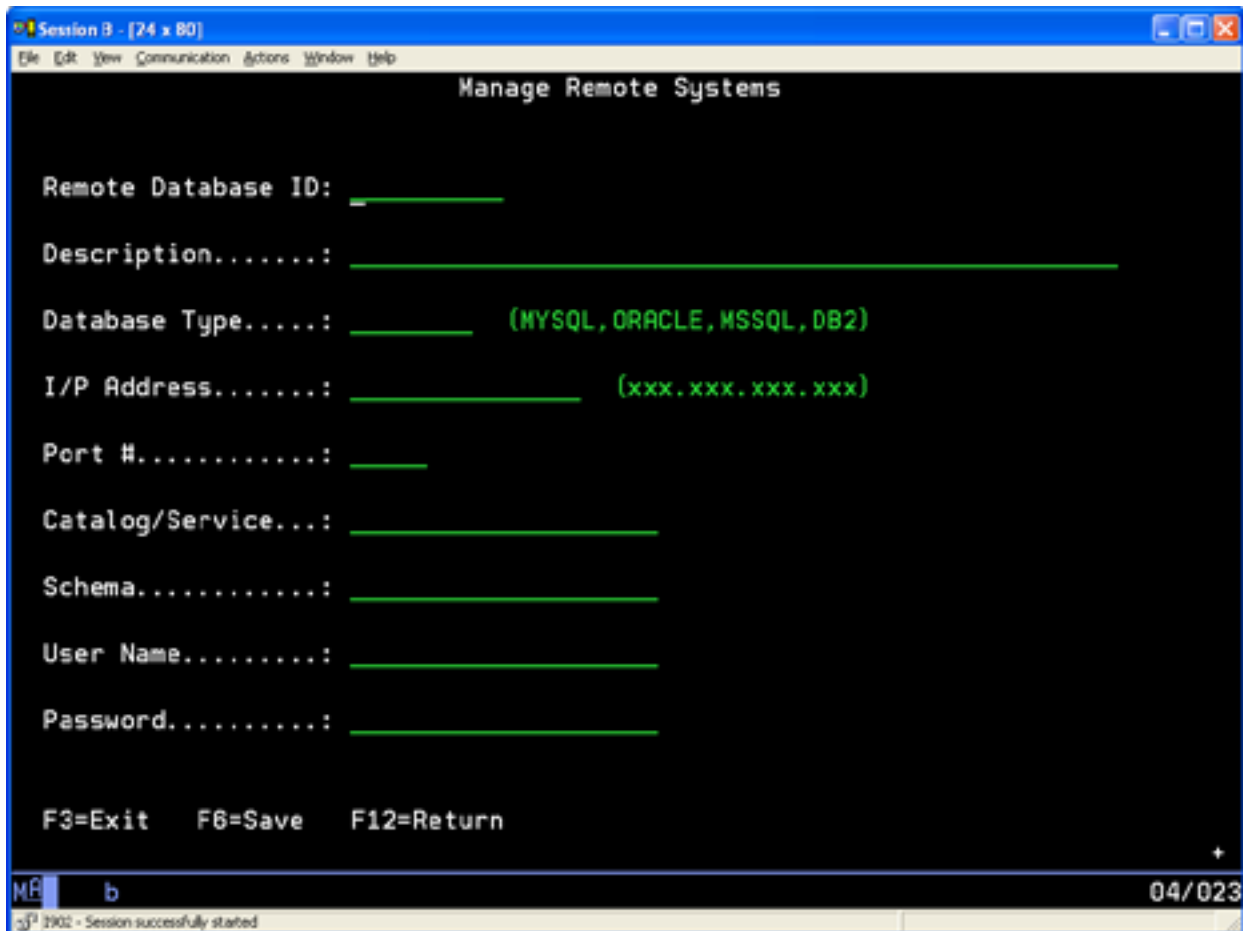


Number of RDB Jobs – The initial number of **RDBWORKER** jobs to run. The default number of jobs is 1. A **RDBWORKER** job is needed for each concurrent user that connects to a remote database.

Turn Tracing On – Default is N. Set to Y when troubleshooting with ProData Tech Support. The DBURDBSBS subsystem must be restarted for this value to take effect.

RDB Connect Timeout – The number of seconds elapsed before a connection attempt to the remote system will occur.

Press **F6** to add a remote connection.



Enter the information for the remote database.

Remote Database ID – This is the name that will be used when referencing this database connection.

Description – The description for this remote connection.

Database Type – The type of database being configured

I/P Address – The I/P address used to access the remote database.

Port # – The port number to be used with the above I/P address to connect to the remote database. If using the default port for the specified database type, this can be left blank. When in doubt, specify the port number.

Catalog/Service – Some databases require a Catalog or Service to be specified on the connection. If one is required for the database specified, enter it here.

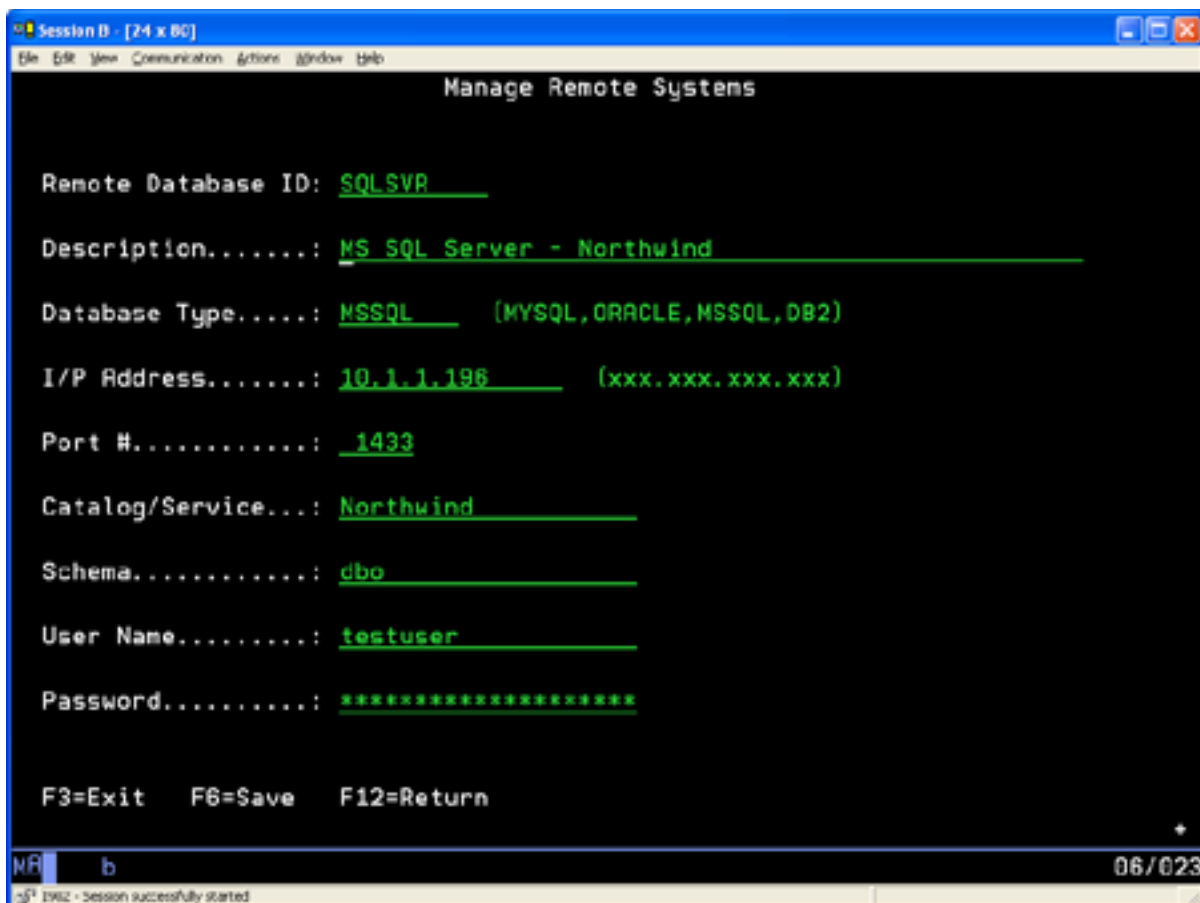
Schema – The schema for the remote database.

User Name – The user to be used when connecting. This user id will control the authority on the remote database when using this connection. This user name must be configured on the remote database.

Password – The password for the above entered user name.

To save the information, **press F6**. The information entered will be encrypted 256 bit and stored in a System *i* object. The object will be named the same as the **Remote Database ID** and be placed in the DBU library. System *i* object level authority can be used, with this object, to add another level of security to the remote connection.

The example below is for a SQL Server configuration.



DBURDBADD

To add a RDBWORKER job without having to restart the DBURDBSBS subsystem, execute the command **DBURDBADD**. One RDBWORKER job will be added each time the command is executed.

DBURDB

To open a table on a remote database, enter the command DBURDB. By default, DBURDB will open the last table specified since this interactive session began. To open a different table, modify either of the first two parameters.

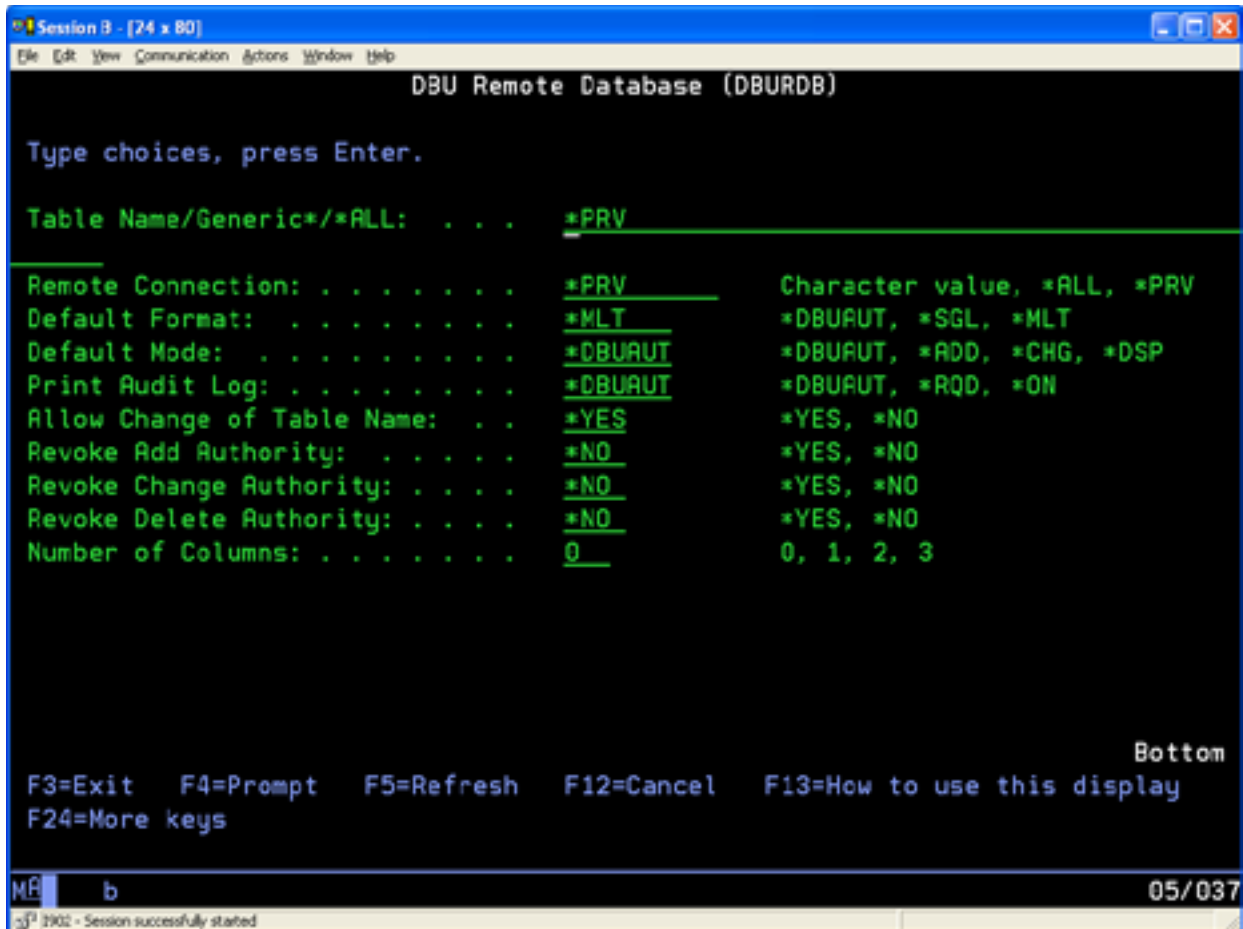


Table Name – Enter the name of the table on the remote system. A generic value or the *ALL may be entered here to retrieve a list of tables to open.

Remote Connection – The Remote Database ID that was created using **DBURDBCFG**. A generic value or the *ALL may be entered here to retrieve a list of Remote Database IDs.