



# Software Installation

## Contacto

**American Top Tools**  
Distribuidor Oficial

Via Laietana 20  
08003 Barcelona  
España

att@att.es  
www.att.es  
+34 933 191 612

© Copyright T.L. Ashford & Associates, Inc. 2014. All rights reserved.

Information in this document is subject to change without notice. No part of the publication may be reproduced, transmitted, transcribed, stored in a retrieval system, or translated into any language in any form or by any means without the written permission of T.L. Ashford & Associates, Inc.

*Windows and the Windows logo are trademarks of the Microsoft group of companies.*

*Adobe Acrobat is a trademark of Adobe Systems Incorporated.*

*IBMi and iSeries and the trademarks contained therein are trademarks of IBM Corp.*

*TLA Forms is a registered trademark of T.L. Ashford and Associates, Inc.*

All other registered names and trademarks referred to in this manual are the property of their respective companies

## Overview

The installation of this software will connect to the IBM i and install the TLAFORM library and a tlaform folder in the home directory of the IFS. This process will occur each time the installation is performed. If the TLAForm library and/or the tlaform folder exists, the installation will continue without replacing the IBM i objects.

TLAForms is downloaded from T.L. Ashford's website ([www.tlashford.com](http://www.tlashford.com)). You must have Download Access\* to log in as an existing customer.

*\*Your Download Access is provided by your T.L. Ashford & Associates Sales Representative.*

### Customer Resources

#### Software

Choose the software you would like to download:

Software:

#### Available Downloads

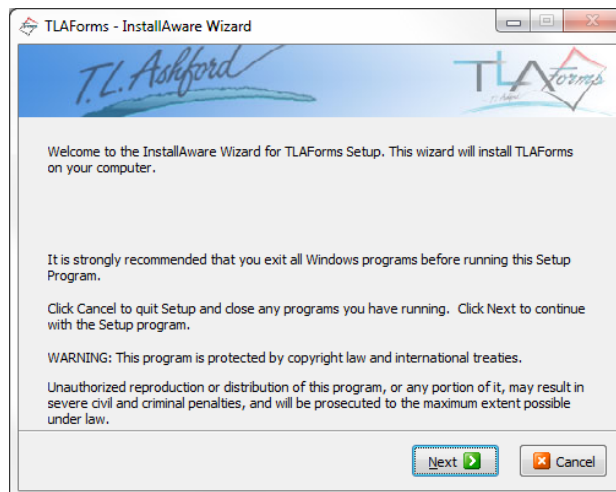
\*\*\* OS400 V5R3 or higher is required for TLAForms. \*\*\*  
Please contact us if you do not meet this requirement.

Name	Size	
TLAForms.zip	72.7 MB	<input type="button" value="Download"/>

Once downloaded: Double-click TLAForms.zip to UNZIP the TLAForms.exe.  
**To install, execute TLAForms.exe.**

## Installation

Once downloaded, TLAForms.zip will appear in your Download folder. Extract, then double-click **TLAForms.exe**. The installation wizard will be displayed.



Click **Next**.

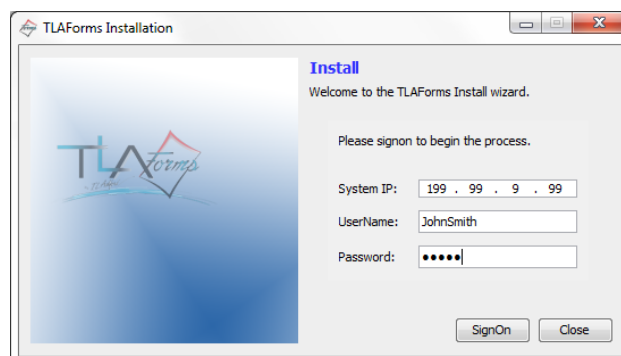
The License Agreement will be displayed.



Review the Agreement; indicate the check box that you have read the agreement.

Click **Next** to continue.

The TLAForms Installation screen will be displayed.



Enter the System IP address of your IBMi, your IBMi User ID and Password.

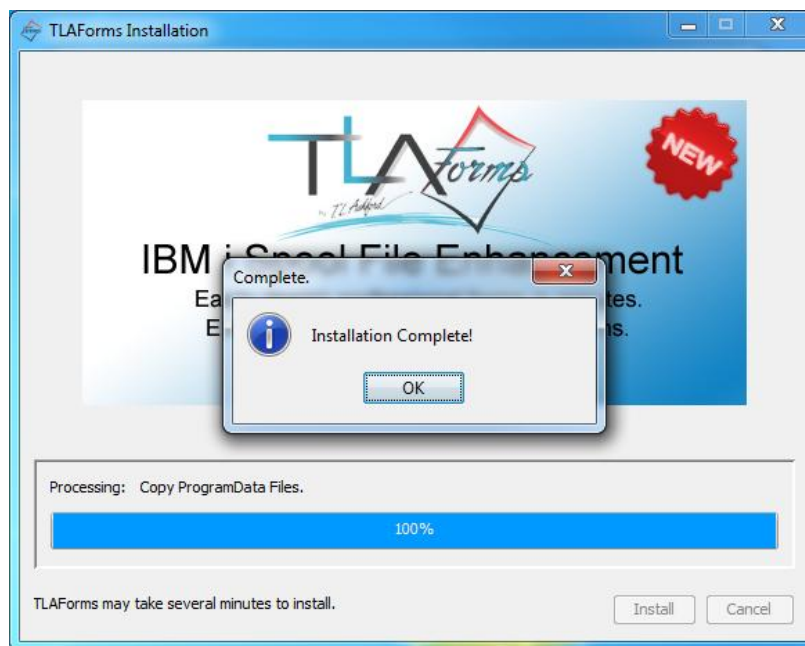
Click **SignOn**

The following window will be displayed.



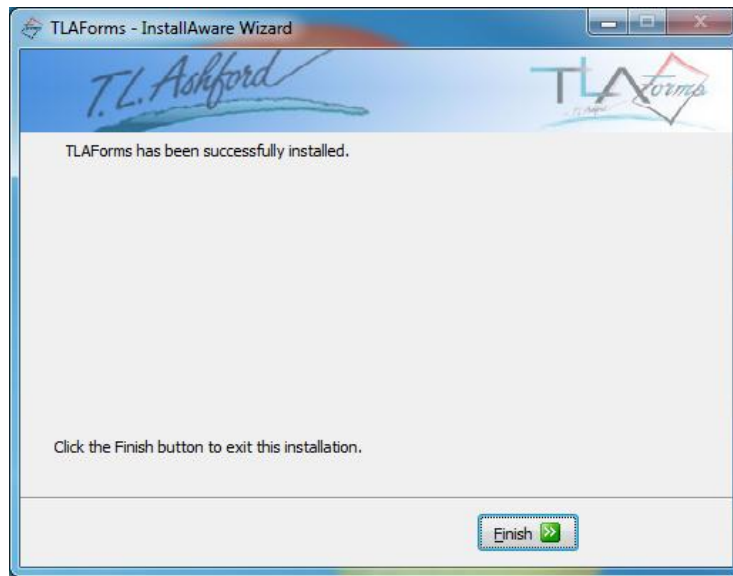
Click **Install**

The installation will proceed and a progress bar will monitor the install process.



Click **OK**.

The following window will be displayed.



Click **Finish** to complete the installation.

## Components

Two components will be installed on the pc, TLAForms Designer and TLAForms Monitor.

### TLAForms Designer



The TLAForms Designer is used to design custom forms using data from an existing IBM i spool file. Fields can be created based on data in the spool file. These fields can then be used as text, bar codes, and graphics within the designer. The form will be generated as a PDF file to a location in the ifs, and the form can be printed or automatically emailed.

### TLAForms Monitor



The TLAForms Monitor is responsible for generating the form. It “watches” the data queue (tlaform/tlaformdq) that must be added to the IBM i output queue where the spool file is generated. When the spool file goes to ready status in the output queue, the monitor will automatically generate the form.

The Monitor application is intended to run on a Windows Server, however it may be run from any or several PC's simultaneously.

To change your output queue to utilize the (tlaform/tlaformdq) data queue, use the following command from an IBM i command line:

**CHGOUTQ OUTQ(OUTQNAME) DTAQ(TLAFORM/TLAFORMDQ)**

## Assistance

Detailed instructions are located in the help section of the TLAForms Designer. For additional support or assistance, please contact T.L. Ashford's technical support at (800)541-4893 or [tech@tlashford.com](mailto:tech@tlashford.com).

## Contacto

# American Top Tools

Distribuidor Oficial

Via Laietana 20  
08003 Barcelona  
España

att@att.es  
www.att.es  
+34 933 191 612

### TLAForms®

©T.L. Ashford & Associates  
626 Buttermilk Pike  
Crescent Springs, KY 41017

Phone: 800-541-4893

Fax: 859-291-1804

Web: [www.tlashford.com](http://www.tlashford.com)



T.L. Ashford